



GAT MONTHLY MEMBERSHIP PROGRESS REPORT

Results as of: 3/31/2023

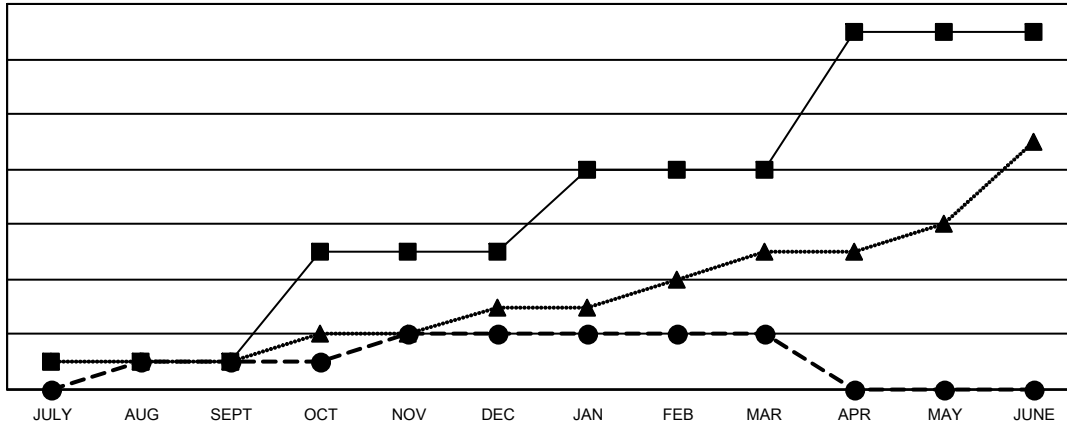
Multiple District 20

LOCATION: NEW YORK

Clubs			
RESULTS FOR 2022-2023			
QUARTER	NEW CLUB GOAL	NEW CLUBS	DROPPED CLUBS
JULY/AUG/SEPT	1	1	4
OCT/NOV/DEC	4	1	6
JAN/FEB/MAR	3	0	0
APR/MAY/JUNE	5	0	0

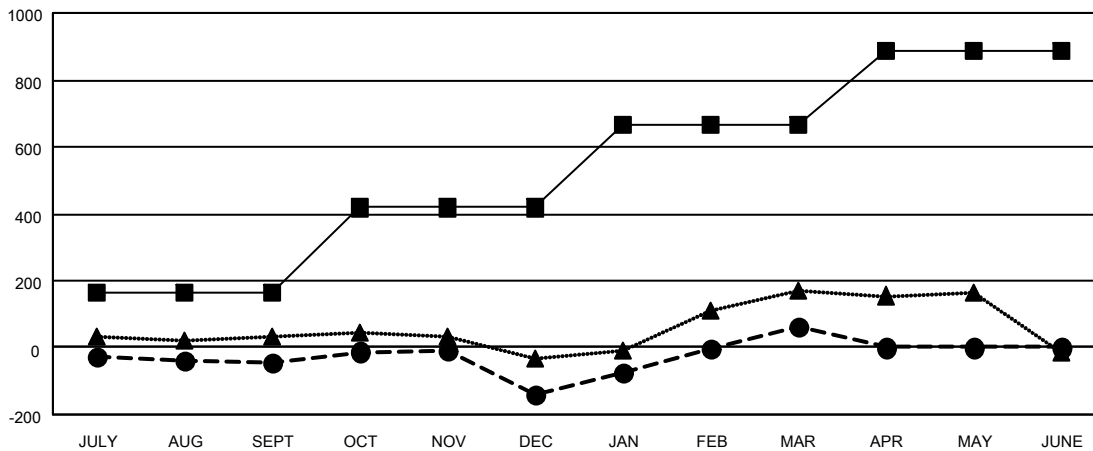
Members			
RESULTS FOR 2022-2023			
QUARTER	MEMBER GROWTH NET GOAL	MEMBER GROWTH ACTUAL	DROPPED MEMBERS ACTUAL (including transfers)
JULY/AUG/SEPT	163	290	307
OCT/NOV/DEC	255	364	440
JAN/FEB/MAR	248	468	236
APR/MAY/JUNE	220	0	0

GOALS AND ACTUAL NEW CLUBS CUMULATIVE



- - CURRENT YEAR GOALS FOR NEW CLUBS
- - CURRENT YEAR ACTUAL NEW CLUBS
- ▲ - LAST YEAR ACTUAL NEW CLUBS

GOALS AND ACTUAL MEMBERS CUMULATIVE



- - MEMBER GROWTH NET GOAL
- - MEMBER GROWTH ACTUAL
- ▲ - LAST YEAR MEMBERSHIP ACTUAL

DROPPED CLUBS: 10	
DROPPED MEMBERS	
DECEASED	113
CLUB CANCELLED	51
OTHER	819
TOTAL	983

250 CLUBS OF 489 ADDED 1 OR MORE NEW MEMBERS

[CLICK HERE FOR CUMULATIVE MEMBERSHIP DATA](#)

GENDER DISTRIBUTION	
MALE	7,812 (58.09%)
FEMALE	5,614 (41.75%)
NON BINARY	0 (0.00%)
PREFER NOT TO ANSWER	22 (0.16%)
TOTAL FAMILY UNIT MEMBERS	2,409
FAMILY MEMBERS PAYING HALF DUES	1,257